



On-line PICASSO PROJECT

**Comprehensive Catalogue Raisonné
Prof. Dr. Enrique Mallen**

1897



Lola à la chemise. Barcelona. [1896] [First-Half]/1897. Oil on wood. 21,6 x 13,7 cm. Museu Picasso, Barcelona. Donation 1970.

OPP.97:049; C:289; MPB:110.039; P.I:215; PP.97:079; EV.15:27p;
RI.13*:151p

Barceloneta. Barcelona. January/1897. Oil on panel. 13,8 x 22,4 cm. Museu Picasso, Barcelona. Donation 1970.

OPP.97:023; C:80; MPB:110.220;
P.I:196; PP.97:001; CR.07:45p;
JG.84*:28; KO.87*:n/a; TO.94*:74





Coupole de l'église de La Mercé. Barcelona. January/1897. Pastel & conté pencil on paper. 18 x 25,2 cm. Museu Picasso, Barcelona. Donation 1970.

OPP.97:024; MPB:110.949; PP.97:002;
CR.07:93p; CR.14:4; EV.15:121p; TO.94*:79;
TO.97*:n/a

Tête de nègre. Barcelona. January/1897. India ink & conté pencil on paper. 12 x 8 cm. Museu Picasso, Barcelona. Donation 1970.

OPP.97:040; MPB:111.306r; P.I:197; PP.97:007;
NS.01:281





Science et charité (Étude) (IV). Barcelona. [January~February]/1897. Watercolor on paper [Obverse of *Tête de femme, de profil*]. 22,5 x 28,6 cm. Museu Picasso, Barcelona. Donation 1970.

OPP.97:004; C:42; MPB:110.089; P.I:204; PP.97:012; IB.05*:n/a; JF.96:32p; MG.10b*:71p; PJ.02*:69; TK.02*:n/a; TO.97*:61a

Science et charité (Étude) (II). Barcelona. [January~February]/1897. Charcoal & conté pencil on paper [Reverse of *Portrait de Joan Vidal i Ventosa*]. [27,5 x 47] [27 x 47] 28 x 47,5 cm. Museu Picasso, Barcelona. Donation 1970.

OPP.97:020; MPB:70.802r; P.I:202; PP.97:010; Z.XXI:55; JP.66:11; MG.10b*:68-69p; PB.81*:2A.9; TO.97*:128b





Science et charité (Étude) (VIII). Barcelona. [January~February]/1897. Oil on canvas. 38 x 48 cm. Yoshii Gallery. Formerly Maya Widmaier Picasso Collection, Paris.

OPP.97:039; P.I:208; PP.97:015; Z.I:10;
AC.46:8; JP.96*:10; MG.10b*:80p; UP.00:16

Étude pour Science et charité (Têtes biffées). Barcelona. [1896] [January~February]/1897. Watercolor & violet ink on paper. [16,5 x 22,2] 16,6 x 22,3 cm. Musée Picasso, Paris.

OPP.97:056; MPP:409.v; PP.97:008;
PD.06*:n/a





La rue et voitures. Barcelona. [First-Half]/1897. Charcoal on paper [Obverse of *La rue et voitures*]. [14,6 x 23,9] 15 x 24 cm. Fundación Almine & Bernard Ruiz-Picasso para el Arte.

OPP.97:035; PP.97:071; Z.VI:85; BA.03a*:1a

La rue et voitures. Barcelona. [First-Half]/1897. Charcoal on paper [Reverse of *La rue et voitures*]. [14,6 x 23,9] 15 x 24 cm. Fundación Almine & Bernard Ruiz-Picasso para el Arte.

OPP.97:036; PP.97:070; Z.VI:82; BA.03a*:1b; BL.91:79p





Portrait de Lola. Barcelona. [First-Half]/1897. Oil on wood [OIC].
S/U. Private collection, Barcelona.

OPP.97:041; P.I:198; PP.97:078

Portrait d'homme. Barcelona. [First-Half]/1897. Oil on canvas. 38 x 34 cm. Museu
Picasso, Barcelona. Donation 1970.

OPP.97:042; C:366; MPB:110.061; P.I:199;
PP.97:080





Intérieur de café. Barcelona. [First-Half]/1897. Oil on canvas. [17,8 x 24,2] 19 x 24 cm. O'Hana Gallery, London.

OPP.97:045; P.I.:210; PP.97:075; Z.XXI:65; AC.46:9; JP.66:19; RP.60*:2; RP.81:1.6

Tête de jeune homme, modèle à La Llotja. Barcelona. [First-Half]/1897. Oil on thick paper. 29 x 23,5 cm. The Picasso Estate.

OPP.97:046; P.I.:212; PP.97:020; Z.XXI:68; EV.15:61p





Caricature de Solei. Barcelona. [First-Half]/1897. India ink on wood [OiC]. 30 x 20 cm. The Picasso Estate.

OPP.97:047; P.I:213; PP.97:074; Z.XXI:414

Bateaux. Barcelona. [1896~] [First-Half]/1897. Conté pencil on paper. 23,5 x 33,8 cm. Museu Picasso, Barcelona. Donation 1970.

OPP.97:048; C:423; MPB:110.785; P.I:214; PP.97:068





Études de mains. Barcelona. [First-Half]/1897.
Pen & ink on paper. 22 x 31,5 cm. The Picasso Estate.

OPP.97:050; P.I:216; PP.97:088; Z.VI:92

Deux études de Lola. Barcelona. [First-Half]/1897. Conté pencil on paper. 22,8 x 33,7 cm. Museu Picasso, Barcelona. Donation 1970.

OPP.97:054; C:548; MPB:110.353;
PP.97:027; MG.04b*:5; PJ.02*:66;
ST.88*:n/a; TK.02*:n/a; TO.97*:92





Étude académique: Homme de dos au bâton. Barcelona. [First-Half]/1897. Oil on canvas. 81 x 60 cm. Private collection.

OPP.97:055

Bateaux. Barcelona. [First-Half]/1897. Conté pencil on paper. 23,5 x 34 cm. Musée Picasso, Paris.

OPP.97:057; MPP:412.v; PP.97:069; Z.VI:110





Étude (d'après Iliissos du Parthénon).

Barcelona. [First-Half]/1897. Conté pencil on charcoal outlines on paper [Reverse of *Portrait d'homme (Alfons Solà i Gené)*]. [30,2 x 61,7] [30 x 61,5] 30 x 62 cm. Musée Picasso, Paris. Acquisition 05/15/1990.

OPP.97:059; MPP:1990.53v; PP.95:159; Z.VI:125; BL.91:90p; CK.04*:2; GR.90*:50; PD.06*:n/a

Étude académique: nu assis. Barcelona. [1895~] [First-Half]/1897. Oil on canvas. 68,3 x 51,2 cm. Museu Picasso, Barcelona. Donation 1970.

OPP.97:062; MPB:110.050; PP.9597:004; EV.15:59p





Autoportrait. Barcelona. [First-Half]/1897. Conté pencil on paper. 31,6 x 21,8 cm. Museu Picasso, Barcelona. Donation 1970.

OPP.97:063; MPB:110.567; PP.97:019; PB.21:10; YP.13*:n/a

Tête de femme, de profil. Barcelona. [First-Half]/1897. Pastel, color pencil & lead pencil on paper [Reverse of *Science et charité (Étude) (IV)*]. [28,6] 28,4 x 22,8 cm. Museu Picasso, Barcelona. Donation 1970.

OPP.97:065; MPB:110.089r; PP.97:021; TO.97*:61b





Croquis. Barcelona. [First-Half]/1897. Pen, ink & traces of conté pencil on laid paper. 23,4 x 16,5 cm. Museu Picasso, Barcelona. Donation 1970.

OPP.97:066; MPB:110.274r; PP.97:025



Croquis de Lola, sœur de l'artiste. Barcelona. [First-Half]/1897. Conté pencil on paper. 21,9 x 16 cm. Museu Picasso, Barcelona. Donation 1970.

OPP.97:067; MPB:110.832; PP.97:035



Fleurs et autres esquisses. Barcelona. [First-Half]/1897. Graphite pencil & pen on paper. 31,6 x 21,8 cm. Museu Picasso, Barcelona. Donation 1970.

OPP.97:071; MPB:110.567r; PP.97:029

La grenouille actrice. Barcelona. [First-Half]/1897. Conté pencil & pen on paper. 21 x 13,4 cm. Museu Picasso, Barcelona. Donation 1970.

OPP.97:074; MPB:110.409; PP.97:028





Lola, sœur de l'artiste. Barcelona. [First-Half]/1897. Conté pencil on paper. 22,2 x 16,3 cm. Museu Picasso, Barcelona. Donation 1970.

OPP.97:075; C:69; MPB:110.831; PP.97:076

Portrait des parents de l'artiste. Barcelona. [First-Half]/1897. Conté pencil on laid paper. 33,6 x 23 cm. Museu Picasso, Barcelona. Donation 1970.

OPP.97:076; C:508; MPB:110.583; PP.97:030; JG.84*:29; MG.04b*:6; PA.21g*:36p; PB.81*:1A.9





Violiniste et autres études. Barcelona. [First-Half]/1897. Conté pencil on laid paper. 23 x 33,6 cm. Museu Picasso, Barcelona. Donation 1970.

OPP.97:077; C:823; MPB:110.583r; PP.97:031; PB.81*:1A.9r

Femme assise. Barcelona. [First-Half]/1897. Conté pencil on paper. 11,5 x 7,8 cm. Museu Picasso, Barcelona. Donation 1970.

OPP.97:109; C:554; MPB:111.310r; PP.97:044





Etudes de cheval et femme. Barcelona. [First-Half]/1897. Conté pencil on paper. 11,5 x 7,8 cm. Museu Picasso, Barcelona. Donation 1970.

OPP.97:110; MPB:111.318r; PP.97:065

Hombres assis. Barcelona. [First-Half]/1897. Conté pencil on paper. 11,5 x 7,8 cm. Museu Picasso, Barcelona. Donation 1970.

OPP.97:112; MPB:111.319r; PP.97:058





Études de cheval. Barcelona. [First-Half]/1897. Conté pencil on paper. 11,5 x 7,8 cm. Museu Picasso, Barcelona. Donation 1970.

OPP.97:113; MPB:111.319; PP.97:066

Scène de rue. Barcelona. [First-Half]/1897. Conté crayon on paper. 15,6 x 21,3 cm. Museu Picasso, Barcelona. Donation 1970.

OPP.97:115; C:73; MPB:110.719;
PP.98:172; PL.89:33





Hombres assis. Barcelona. [First-Half]/1897. Conté pencil on paper. 11,5 x 7,8 cm. Museu Picasso, Barcelona. Donation 1970.

OPP.97:116; MPB:111.320; PP.97:059



Anarchistes. Barcelona. [First-Half]/1897. Ink (reproduced in Blanco y Negro). S/U. Private collection.

OPP.97:117; PP.97:109; BP.62:60

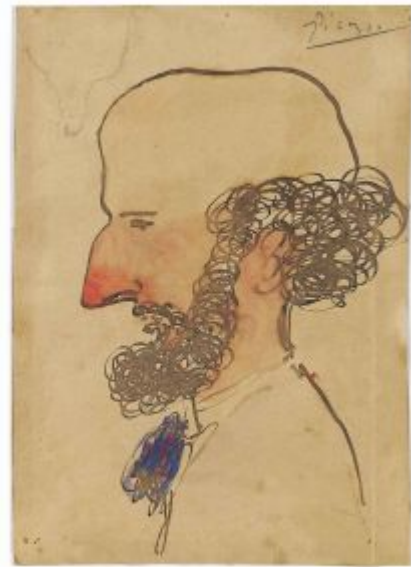


Études. Barcelona. [First-Half]/1897. Pen & India ink on graph paper. 30,5 x 20,7 cm. Nationalgalerie, Museum Berggruen, Staatlichen Museen zu Berlin.

OPP.97:118; PP.97:103; Z.VI:96; BL.06*:65p; BR.96*:7

Juan Gay, musicien des Quatre Gats. Barcelona. [First-Half]/1897. Watercolour & pen & brown ink on paper. 20,9 x 14,8 cm. Private collection. Formerly Christie's. #330, 1187, 11/20/13.

OPP.97:122; PP.00:021; Z.VI:106; AC.46:33p; PA.20j*:16





La sœur de l'artiste. Barcelona. [First-Half]/1897. Conté crayon. 33,7 x 24,5 cm. Private collection.

OPP.97:127; PP.97:077; Z.VI:117

Portrait d'Osso. Barcelona. [First-Half]/1897. [Conté crayon]. S/U. Private collection.

OPP.97:128; PP.00:022; Z.VI:111





Études. Barcelona. [First-Half]/1897. Pen & ink on paper. 30,8 x 22 cm. Private collection.

OPP.97:131; PP.97:089; Z.VI:94

Études. Barcelona. [First-Half]/1897. Pen & ink on paper. 21 x 13,5 cm. Private collection.

OPP.97:133; PP.97:087; Z.VI:91





Études. Barcelona. [First-Half]/1897. Pen & ink on paper. 30,8 x 22,2 cm. Private collection.

OPP.97:134; PP.97:086; Z.VI:90

Études. Barcelona. [First-Half]/1897. Pen & ink on paper. 21 x 13,4 cm. Private collection.

OPP.97:135; PP.97:073; Z.VI:89





Études. Barcelona. [First-Half]/1897. Conté crayon. 49,5 x 31 cm. Private collection.

OPP.97:136; PP.97:072; Z.VI:86

Études. Barcelona. [First-Half]/1897. Pen & ink. 22 x 17,9 cm. Private collection.

OPP.97:137; PP.97:084; Z.VI:79





La Sainte Cène (Étude). Barcelona. [First-Half]/1897. Graphite pencil on paper. [22,6 x 26,3] 22,2 x 26,1 cm. Museu Picasso, Barcelona. Donation 1970.

OPP.97:141; MPB:110.650; PP.97:083;
BA.18*:51p

Hommes assis. Barcelona. [First-Half]/1897. Conté pencil on paper. 11,5 x 7,8 cm. Museu Picasso, Barcelona. Donation 1970.

OPP.97:143; MPB:111.320r; PP.97:060





Homme assis et étude d'homme. Barcelona. [First-Half]/1897. Conté pencil & pen & ink on paper. 11,5 x 7,8 cm. Museu Picasso, Barcelona. Donation 1970.

OPP.97:144; MPB:111.321r; PP.97:061

Cheval en mouvement. Barcelona. [First-Half]/1897. Oil on wood. 13,8 x 22,1 cm. Museu Picasso, Barcelona. Donation 1970.

OPP.97:145; C:362; MPB:110.217; PP.97:062





Silhouette de cheval en laisse. Barcelona. [First-Half]/1897. Oil on wood. 13,8 x 22 cm. Museu Picasso, Barcelona. Donation 1970.

OPP.97:146; C:363; MPB:110.223; PP.97:063

Esquisses. Barcelona. [First-Half]/1897. Pen & ink on paper. 16,1 x 12,1 cm. Museu Picasso, Barcelona. Donation 1970.

OPP.97:147; C:519; MPB:110.249; PP.97:023





Deux études de main. Barcelona. [First-Half]/1897. Graphite on paper. 16,1 x 12,1 cm. Museu Picasso, Barcelona. Donation 1970.

OPP.97:148; MPB:110.249r; PP.97:024



Croquis. Barcelona. [First-Half]/1897. Pen & ink on paper. 25,2 x 19,8 cm. Museu Picasso, Barcelona. Donation 1970.

OPP.97:149; C:399; MPB:110.382; PP.97:096



Le combat. Barcelona. [First-Half]/1897. Pen & ink on paper. 20,4 x 25,9 cm. Museu Picasso, Barcelona. Donation 1970.

OPP.97:150; C:133; MPB:110.384r; PP.97:098

Croquis pour Le combat et autres personnages. Barcelona. [First-Half]/1897. Pen & ink & Conté pencil on paper. 20,2 x 25,8 cm. Museu Picasso, Barcelona. Donation 1970.

OPP.97:151; C:530; MPB:110.385; PP.97:099





Croquis pour Le combat et nu féminin.
Barcelona. [First-Half]/1897. Pen & ink on paper.
20,2 x 25,8 cm. Museu Picasso, Barcelona.
Donation 1970.

OPP.97:152; C:532; MPB:110.385r; PP.97:100

Femme en robe longue et tête d'homme au chapeau. Barcelona.
[First-Half]/1897. Sepia ink & pen on paper. 27,7 x 10,5 cm. Museu
Picasso, Barcelona. Donation 1970.

OPP.97:153; MPB:110.387r; PP.97:022





Cinq études de figures. Barcelona. [First-Half]/1897. Conté pencil on on JCA watermarked paper. 30,5 x 46,5 cm. Museu Picasso, Barcelona. Donation 1970.

OPP.97:155; C:523; MPB:110.588; PP.9900:224

Homme de dos et croquis inachevés. Barcelona. [First-Half]/1897. Conté pencil on paper. 30,5 x 46,5 cm. Museu Picasso, Barcelona. Donation 1970.

OPP.97:156; MPB:110.588r; PP.9900:225





Groupe de personnes sur une jetée. Barcelona. [First-Half]/1897. Conté pencil on paper. 17,3 x 24,8 cm. Museu Picasso, Barcelona. Donation 1970.

OPP.97:157; C:72; MPB:110.642; PP.97:032

Étude d'arbres et autres croquis.

Barcelona. [First-Half]/1897. Graphite on JOSE watermarked paper. 19,8 x 27,5 cm. Museu Picasso, Barcelona. Donation 1970.

OPP.97:158; C:582; MPB:110.649; PP.97:033





Croquis. Barcelona. [First-Half]/1897. Graphite on paper. 27,5 x 19,8 cm. Museu Picasso, Barcelona. Donation 1970.

OPP.97:159; MPB:110.649r; PP.97:005

Étude de femme, et main. Barcelona. [First-Half]/1897. Conté pencil on AS watermarked paper. 34 x 23,5 cm. Museu Picasso, Barcelona. Donation 1970.

OPP.97:161; C:517; MPB:110.900; PP.97:036;
PB.81*:24-8





Carnet de Barcelona (Couverture). Barcelona. [First-Half]/1897. Mixed media. 8,6 x 12,3 cm. Museu Picasso, Barcelona. Donation 1970.

OPP.97:162; MPB:110.915c

Esquisses. Barcelona. [First-Half]/1897. Conté pencil & violet ink & pen on grey paper [Oic]. 11,8 x 7,8 cm. Museu Picasso, Barcelona. Donation 1970.

OPP.97:168; MPB:111.306; PP.97:006





Garçon dessinant et étude de jambe. Barcelona. [First-Half]/1897. Conté pencil on paper. 11,5 x 7,8 cm. Museu Picasso, Barcelona. Donation 1970.

OPP.97:169; MPB:111.307; PP.97:037

Hommes travaillant. Barcelona. [First-Half]/1897. Conté pencil on paper. 11,5 x 7,8 cm. Museu Picasso, Barcelona. Donation 1970.

OPP.97:170; MPB:111.307r; PP.97:038





Étude académique: études d'homme. Barcelona. [First-Half]/1897. Conté pencil on paper. 11,5 x 7,8 cm. Museu Picasso, Barcelona. Donation 1970.

OPP.97:171; MPB:111.308; PP.97:039

Étude académique. Barcelona. [First-Half]/1897. Conté pencil on paper. 11,5 x 7,8 cm. Museu Picasso, Barcelona. Donation 1970.

OPP.97:172; MPB:111.308r; PP.97:040





Étude académique. Barcelona. [First-Half]/1897. Conté pencil on paper. 11,5 x 7,8 cm. Museu Picasso, Barcelona. Donation 1970.

OPP.97:173; MPB:111.309; PP.97:041

Études de main et hommes. Barcelona. [First-Half]/1897. Conté pencil on paper. 11,5 x 7,8 cm. Museu Picasso, Barcelona. Donation 1970.

OPP.97:174; MPB:111.309r; PP.97:042





Études d'homme. Barcelona. [First-Half]/1897. Conté pencil on paper. 11,5 x 7,8 cm. Museu Picasso, Barcelona. Donation 1970.

OPP.97:175; MPB:111.310; PP.97:043

Étude académique. Barcelona. [First-Half]/1897. Conté pencil & chalk on paper. 11,5 x 7,8 cm. Museu Picasso, Barcelona. Donation 1970.

OPP.97:177; MPB:111.311; PP.97:045





Études de main. Barcelona. [First-Half]/1897. Graphite, Conté pencil & chalk on paper. 11,5 x 7,8 cm. Museu Picasso, Barcelona. Donation 1970.

OPP.97:178; MPB:111.311r; PP.97:046

Femmes et étude de mains. Barcelona. [First-Half]/1897. Conté pencil & chalk on paper. 11,5 x 7,8 cm. Museu Picasso, Barcelona. Donation 1970.

OPP.97:179; MPB:111.312; PP.97:047





Femme assise. Barcelona. [First-Half]/1897. Conté pencil on paper. 11,5 x 7,8 cm. Museu Picasso, Barcelona. Donation 1970.

OPP.97:180; MPB:111.312r; PP.97:048

Femme. Barcelona. [First-Half]/1897. Conté pencil on paper. 11,5 x 7,8 cm. Museu Picasso, Barcelona. Donation 1970.

OPP.97:181; MPB:111.313; PP.97:049





Couple assis. Barcelona. [First-Half]/1897. Conté pencil on paper. 11,5 x 7,8 cm. Museu Picasso, Barcelona. Donation 1970.

OPP.97:182; MPB:111.313r; PP.97:050

Étude d'homme assis. Barcelona. [First-Half]/1897. Conté pencil on paper. 11,5 x 7,8 cm. Museu Picasso, Barcelona. Donation 1970.

OPP.97:183; MPB:111.314; PP.97:051





Homme assis. Barcelona. [First-Half]/1897. Conté pencil on paper. 11,5 x 7,8 cm. Museu Picasso, Barcelona. Donation 1970.

OPP.97:184; MPB:111.314r; PP.97:052

Homme lisant. Barcelona. [First-Half]/1897. Conté pencil on paper. 11,5 x 7,8 cm. Museu Picasso, Barcelona. Donation 1970.

OPP.97:185; MPB:111.315; PP.97:053





Femme de dos. Barcelona. [First-Half]/1897. Conté pencil on paper. 11,5 x 7,8 cm. Museu Picasso, Barcelona. Donation 1970.

OPP.97:186; MPB:111.315r; PP.97:054

Étude de croupe de cheval. Barcelona. [First-Half]/1897. Conté pencil on paper. 11,5 x 7,8 cm. Museu Picasso, Barcelona. Donation 1970.

OPP.97:187; MPB:111.316; PP.97:064



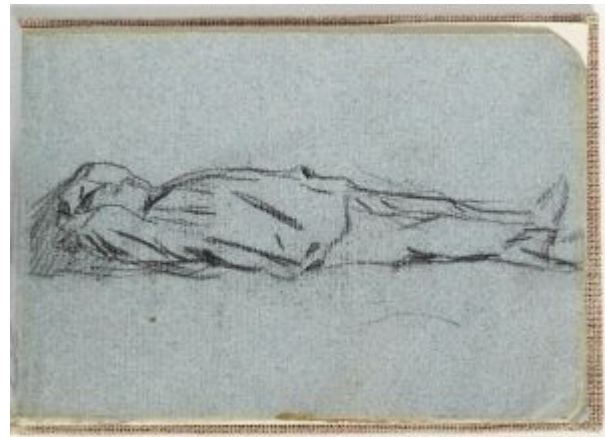


Homme assis. Barcelona. [First-Half]/1897. Conté pencil on paper. 11,5 x 7,8 cm. Museu Picasso, Barcelona. Donation 1970.

OPP.97:188; MPB:111.316r; PP.97:055

Homme couché. Barcelona. [First-Half]/1897. Conté pencil on paper. 7,8 x 11,5 cm. Museu Picasso, Barcelona. Donation 1970.

OPP.97:189; MPB:111.317; PP.97:056





Homme assis. Barcelona. [First-Half]/1897. Conté pencil on paper. 11,5 x 7,8 cm. Museu Picasso, Barcelona. Donation 1970.

OPP.97:190; MPB:111.317r; PP.97:057

Études de gitane espagnole. Barcelona. [First-Half]/1897~1898. Charcoal [Obverse of *Arbre*]. 25,5 x 16 cm. Marina Picasso Collection. Courtesy Galerie Jan Krugier, Geneva.

OPP.97:121; PP.98:226; Z.VI:88; JG.84*:40; TO.94*:118r





Guitariste. Barcelona. 1897~1898. Pencil & sepia ink wash on paper. 22 x 13 cm. Private collection.

OPP.97:022; PA.20j:13p

Esquisses. Barcelona. [First-Half]/1897~1898. Sanguine & Conté pencil on paper. 20 x 12 cm. Museu Picasso, Barcelona. Donation 1970.

OPP.97:125; MPB:111.533r





Études. Barcelona. [First-Half]/1897 [1898]. Conté crayon. 24,6 x 16 cm. Private collection.

OPP.97:139; PP.9798:055; Z.VI:146

Études. Barcelona. [First-Half]/1897 [1898]. Conté crayon. 21,6 x 15,6 cm. Private collection.

OPP.97:140; PP.9798:007; Z.VI:118





Homme lisant et deux curieux. Barcelona. [First-Half]/1897~1898. Pen & ink on paper. 13,4 x 21 cm. Museu Picasso, Barcelona. Donation 1970.

OPP.97:154; C:581; MPB:110.409r; PP.9899:052

Couple assis. Barcelona. [First-Half]/1897~1898. Conté pencil on paper. 22,2 x 16,7 cm. Museu Picasso, Barcelona. Donation 1970.

OPP.97:160; C:518; MPB:110.635; PP.9798:003





Femme assise. Barcelona. [First-Half]/1897~1898. Conté pencil on paper. 32,1 x 22,2 cm. Museu Picasso, Barcelona. Donation 1970.

OPP.97:164; C:542; MPB:110.758; PP.9798:004



Muletier. Barcelona. [First-Half]/1897~1898. Conté crayon on paper. 18,5 x 13 cm. Museu Picasso, Barcelona. Donation 1970.

OPP.97:111; C:104; MPB:111.488; PP.98:159; PL.89:29; TO.97:118p



Poussin et signatures de P. Ruiz Picasso.
Barcelona. [First-Half]/1897~1898. Graphite &
Conté pencil on paper. 13,9 x 45,8 cm. Museu
Picasso, Barcelona. Donation 1970.

OPP.97:114; MPB:110.259r; PP.9798:028.ii;
BA.12b*:n/a; BL.91:90p; BL.91:91p; JR.91:96p

Six personnages masculins. [Barcelona]. [First-
Half]/1897~1898. Conté crayon on paper. 32,1 x 22,2 cm.
Museu Picasso, Barcelona. Donation 1970.

OPP.97:119; MPB:110.758r; PP.9798:005; NS.01:43





Portrait de l'artiste par Pallarès et études. Barcelona. 1897~1899. Black pencil, pen & ink on paper. 32 x 24 cm. Musée Picasso, Paris. Dation 1979.

OPP.97:038; MPP:411.r; PP.98:231; Z.VI:73; BL.91*:19; MA.08a*:n/a; PA.19h*:22; PB.21:21; PD.06*:202p; RB.99:84p

Intérieur de café. Barcelona. [First-Half]/1897~1899. Conté crayon on paper. 15,4 x 20,9 cm. Museu Picasso, Barcelona. Donation 1970.

OPP.97:142; C:143; MPB:110.558; PP.9798:010; BA.18*:58p





Fillette et autres croquis. Barcelona. [First-Half]/1897~1899. Conté pencil on paper. 18 x 11,7 cm. Museu Picasso, Barcelona. Donation 1970.

OPP.97:163; MPB:110.424r; PP.9798:057

Croquis. Barcelona. [First-Half]/1897~1899. Conté pencil on paper. 32,2 x 22,4 cm. Museu Picasso, Barcelona. Donation 1970.

OPP.97:165; MPB:110.679r; PP.9798:009





Femme assise avec deux enfants. Barcelona. 1897~1899. Conté pencil on paper. 17,2 x 11,4 cm. Museu Picasso, Barcelona. Donation 1970.

OPP.97:166; C:618; MPB:110.603; PP.99:130

Fragment d'un dessin. Barcelona. 1897~1899. Conté pencil on paper. 17,2 x 11,4 cm. Museu Picasso, Barcelona. Donation 1970.

OPP.97:167; MPB:110.603r; PP.99:131





Fragment d'un dessin. Barcelona. 1897~1899. Conté pencil on paper. 17,5 x 12 cm. Museu Picasso, Barcelona. Donation 1970.

OPP.97:176; MPB:110.425r; PP.9798:059

Bombardier. Barcelona. 1897~1899. Conté pencil on paper. 32,2 x 22,4 cm. Museu Picasso, Barcelona. Donation 1970.

OPP.97:191; MPB:110.679; PP.9798:008





Deux figures. Barcelona. [First-Half]/1897~1899. Conté pencil on paper. 17,5 x 12 cm. Museu Picasso, Barcelona. Donation 1970.

OPP.97:082; C:615; MPB:110.425; PP.9798:058

Charité. Barcelona. [First-Half]/1897~1899 [1899]. Black pencil on paper. 23,5 x 34 cm. Musée Picasso, Paris. Dation 1979.

OPP.97:058; MPP:412.r; PP.99:009;
Z.VI:283; BF.21*:207p; BF.21:91p





Femme de profil et coq. Barcelona. [First-Half]/1897~1899. Conté crayon on paper. 11,7 x 18 cm. Museu Picasso, Barcelona. Donation 1970.

OPP.97:120; C:154; MPB:110.424; PP.9798:056; NS.01:56

Science et charité. Barcelona. [1896~]
[Early~Spring] March/1897. X-radiograph
of oil on canvas [Underlayer of *Science et
charité*]. 197 x 249,5 cm. Museu Picasso,
Barcelona. Donation 1970.

OPP.97:192





Science et charité. Barcelona. [1896~]
[Early~Spring] March/1897. Oil on canvas
[Overlayer of *Science et charité*]. 197 x 249,5 cm.
Museu Picasso, Barcelona. Donation 1970.

OPP.97:001; C:45; MPB:110.046; P.I:209;
PP.97:017; Z.XXI:56; AB.09:1; AC.81:63p;
AD.92:11p; AP.92:2; BA.17:60p; BF.21:91p;
BR.04:7; BS.12:11p; CK.10:13; CR.84:151p;
CR.98:31p; DF.10:14p; DT.78:1; EC.02:27;
EC.11:164p; EV.15:75p; FM.84:9p; GB.87:5;
GC.96:44p; GP.96:49p; HD.01:4; HD.04:6p;
JC.69:24; JF.94a:3; JF.96:33p; JL.06:39p;
JL.71:199p; JP.66:10; JR.91:81p; JW.01:10p;
LB.58:17p; LG.92:13p; MC.11:28p; MG.10b*:48-
49p; MM.00:10p; MM.97:26p; MU.18:2;
NM.06:25p; NM.95:19p; NS.01:107; PC.77:37p;
PD.09:13p; PD.93:1; PJ.02:29p; RI.03a:4;
RI.03b:57p; RP.81:1.4; RR.09:28p; TO.97:22p;
UP.00:17; UW.84:12p; VO.16:14p; WR.12b:14;
WR.80*:24p; WS.88:9; WS.95a:19p; WW.73:18p;
WW.91:50-51p

Science et charité (Étude) (I).

Barcelona. [March]/1897. Conté pencil on
paper. 10,5 x 27,7 [27,5] cm. Museu
Picasso, Barcelona. Donation 1970.

OPP.97:043; C:499; MPB:110.387;
P.I:201; PP.97:009; MG.10b*:67p





Science et charité (Étude) (VII). Barcelona. [March]/1897. Watercolor, India ink & pencil on paper. 37 x 25,5 cm. The Picasso Estate.

OPP.97:044; P.I:207; PP.97:011; Z.VI:48; MG.10b*:78p; PJ.02*:67

Jardin de couvent. Barcelona. 6-June/1897. Watercolor & Conté craon on paper. 10,7 x 16,3 cm. Museu Picasso, Barcelona. Donation 1970.

OPP.97:193; MPB:110.946; PP.97:026





Montagnes près de Málaga. Málaga.
[Summer]/1897. Oil on canvas. [34 x 54] 33,8 x
53,8 cm. Christie's. #188, 6555, 02/05/02.

OPP.97:005; PP.9697:105; TO.94*:42

Couples dansant. Barcelona.
September/1897. Violet ink, pen & brush
on paper. 16,5 x 23,4 cm. Museu Picasso,
Barcelona. Donation 1970.

OPP.97:052; C:421; MPB:110.274;
P.I:218; PP.97:081; EV.10*:43p;
PP.19:294p; TO.97*:55





Le dernier souper (Étude). Barcelona.
September/1897. Pen & ink. 31,2 x 23,8 cm.
Private collection.

OPP.97:138; PP.97:082; Z.VI:77

Salle à manger. Madrid.
[September~December]/1897 [~1898].
[Pencil] Sanguine on paper. 12 x 20 cm.
Museu Picasso, Barcelona. Donation 1970.

OPP.97:006; MPB:111.522; P.I:219;
PP.97:092; BA.18:52p; JR.91:91p





Chambre à coucher de l'artiste. Madrid.
[September~December]/1897 [~1898]. [Pencil]
Sanguine on paper. 12 x 20 cm. Museu Picasso,
Barcelona. Donation 1970.

OPP.97:007; MPB:111.521; P.I:220; PP.97:091

**Francisco Bernareggi assis à la
chambre à coucher de l'artiste à
Madrid.** Madrid.
[September~December]/1897 [~1898].
[Pencil] Sanguine on paper. 12 x 20 cm.
Museu Picasso, Barcelona. Donation 1970.

OPP.97:009; MPB:111.531; P.I:223;
PP.98:084





Salon du Prado. Madrid.
[September~December]/1897. Oil on wood. 10 x 15,5 cm. Museu Picasso, Barcelona. Donation 1970.

OPP.97:008; C:14; MPB:110.160; P.I:221;
PP.97:094; BA.08a*:n/a; JM.93:19p; JR.91:91p;
MA.83a*:n/a; MA:92*:n/a; RS.88:34p;
TO.94*:87; TO.95b:21p; TV.06*:n/a; UP.00:22

Scène de corrida. Madrid.
September/1897~May/1898. Pen, brown ink & color pencil on paper. 13,2 x 21 cm. Musée Picasso, Paris.

OPP.97:002; MPP:425; PP.98:031;
Z.VI:179; BL.91*:6; JG.84*:35;
MA.08a*:n/a; PA.07a*:77p; PA.93a*:9;
PT.05:77p; RK.01*:n/a





Portrait de Philippe IV (d'après Velázquez). Madrid. September/1897~May/1898. Oil on canvas. 54,2 x 46,7 cm. Museu Picasso, Barcelona. Donation 1970.

OPP.97:003; C:103; MPB:110.017; P.I:230; PP.9798:025; AB.08*:n/a; EC.16:3; GP.96:53p; JG.84*:32; JL.06:43p; PD.09:14p; RR.09:17p; SG.96:1.2; UP.00:25; WW.91:48p

Portrait de Muñoz Degrain. Madrid. September/1897~May/1898. Sanguine on paper. 20 x 12 cm. Museu Picasso, Barcelona. Donation 1970.

OPP.97:010; MPB:111.530; P.I:224; PP.9798:047; JR.91:89p





Homme dans un parc. Madrid. September/1897~May/1898. Oil on canvas. 28,3 x x 20,2 cm. Museu Picasso, Barcelona. Donation 1970.

OPP.97:011; C:95; MPB:110.088; P.I:225; PP.9798:014;
BF.21:73p; EV.08:13; EV.10*:236p; TO.94*:81

Pavillon dans le Parc del Retiro. Madrid. September/1897~May/1898. Oil on canvas pasted on cardboard. 16 x 25,2 cm. Museu Picasso, Barcelona. Donation 1970.

OPP.97:012; C:101; MPB:110.227;
P.I:226; PP.9798:017; GP.96:55p;
MA.99b*:n/a; MA:92*:n/a; PA.21g*:272p;
TO.94*:85





Étang dans Parc del Retiro. Madrid.
September/1897~May/1898. Siena pencil &
watercolor on paper. 12 x 19,5 cm. Museu Picasso,
Barcelona. Donation 1970.

OPP.97:013; MPB:111.428; P.I:227;
PP.9798:019; TO.94*:96

Le Parc del Retiro. Madrid.
September/1897~May/1898. Oil on
canvas. 18,5 x 26,5 cm. Museu Picasso,
Barcelona. Donation 1970.

OPP.97:014; C:114; MPB:110.097;
P.I:228; PP.9798:016; GP.96:56p;
TO.94*:82





Bernareggi dans El Prado. Madrid. September/1897~May/1898.
Pencil on paper. 19,5 x 12 cm. Museu Picasso, Barcelona. Donation
1970.

OPP.97:015; MPB:111.447; P.I:229; PP.98:078; BA.08a*:n/a;
JR.91:94p; MM.97:27p

Courses de taureaux (d'après Goya).
Madrid. September/1897~May/1898.
Sanguine & pencil on paper. 17,5 x 10,5
cm. Museu Picasso, Barcelona. Donation
1970. Album 110.917.

OPP.97:016; MPB:111.365r; P.I:231;
PP.98:030; JR.91:91p; PA.93a*:10





Portrait de Hortensí Güell. Madrid.

September/1897~May/1898. Charcoal on wove paper. [35,5 x 51] 28,8 x 21,9 cm. Sotheby's. #394, N09711, 05/17/17. Formerly Wright's. #1, 04/25/13; David M. Campbell Collection, Toronto; Sotheby's. #L312, 04/05/89.

OPP.97:017; P.I:232; PP.98:002; AC.09:133p; EV.08:24; GP.96:54p; TO.95a*:11

Bois. Madrid. October/1897~May/1898. Oil on canvas. 28,1 x 37,5 cm. Museu Picasso, Barcelona. Donation 1970.

OPP.97:027; C:142; MPB:110.071; PP.9798:013; CT.23*:2; TO.94*:86





Lettre de l'artiste à son ami Joaquim Bas (II).

Madrid. 3-November/1897. Ink on paper. 27 x 41,5 cm. Fundació Palau, Caldes d'Estrac. (D.9131).

OPP.97:107; BA.12b:35p; EV.10*:40p;
PA.21g*:21p

Lettre de l'artiste à son ami Joaquim Bas (I). Madrid. 3-November/1897. Ink on paper. 27 x 41,5 cm. Fundació Palau, Caldes d'Estrac. (D.9131).

OPP.97:108; EV.10*:40p; PA.21g*:21p





Une querelle. Madrid. 14-December/1897. Pen & ink on paper. 30,8 x 21 cm. The Picasso Estate.

OPP.97:019; P.I:234; PP.97:101; Z.VI:83

Études. Madrid. 14-December/1897. Pen & ink on paper. 30,8 x 21 cm. Private collection.

OPP.97:132; PP.97:102; Z.VI:93





La bagarre et esquisses diverses. Madrid. 27-December/1897. Ink on squared paper. [20] 40 x 25,1 cm. Museu Picasso, Barcelona. Donation 1970.

OPP.97:018; C:130; MPB:110.752; P.I:233; PP.97:104

Montagnes près de Málaga (A mi querido amigo D. Hermenegildo).

Málaga. 1897. Oil on canvas [Overlayer of *Paysans dans la campagne*]. 60,5 x 82,5 cm. Sotheby's. #N/A, L23009, 10/10/23. Formerly Georges Encil Collection, Bahamas.

OPP.97:021; PP.9697:104; Z.VI:100; JM.07:12p; TO.94*:41





Paysage urbain avec coupole. Madrid. 1897. Oil on canvas. 31 x 46,5 cm. Museu Picasso, Barcelona. Donation 1970.

OPP.97:028; C:113; MPB:110.064; P.I:200; PP.97:004; TO.94*:88

Paysage. Madrid. 1897. Conté pencil on paper. 10,5 x 17,5 cm. Museu Picasso, Barcelona. Donation 1970.

OPP.97:029; MPB:111.350r; PP.98:001; TO.94*:89





Autoportrait. [Madrid]. [1897]. India ink, pen & pastel. 17 x 15 cm. Pieter and Olga Dreesmann Collection, London. (Inv A014). Formerly Digard. 2007.

OPP.97:037

Autoportrait. [Madrid]. 1897. Charcoal & brown crayon on paper. 22 x 13 cm. Private collection.

OPP.97:051; P.I:217; PP.97:085; AP.89:15p; AP.97:13p; JR.91:88p; PB.21:9; WR.96:115p





Portrait de Modesto Castilla. Madrid. 1897. Oil on canvas on cardboard [OIC]. 40 x 30 cm. Private collection, Barcelona.

OPP.97:053; P.I:222; PP.97:107

Portrait de femme (Para Paula). Barcelona [Madrid]. [1897]. Colored pencil & charcoal on paper. 20,7 x 15,5 cm. Forum Gallery Inc., New York. Formerly Galerie Berès, Paris.

OPP.97:060; PP.97:108; MM.97*:B13; NY.23f*:n/a; NY.23g*:n/a; RB.97:23p





La bagarre. Madrid. 1897. Pen on paper. 20,4 x 25,9 cm. Museu Picasso, Barcelona. Donation 1970.

OPP.97:073; C:531; MPB:110.384; PP.97:097

Paysans dans la campagne. Málaga. 1897. X-radiograph of oil on canvas [Underlayer of *Montagnes près de Málaga (A mi querido amigo D. Hermenegildo)*]. 60,5 x 82,5 cm. Georges Encil Collection, Bahamas.

OPP.97:123; TO.94:19p





Homme assis. Madrid. 1897. Conté crayon. 48 x 31,5 cm. Private collection.

OPP.97:129; PP.97:106; Z.VI:99

Le pianiste du café Numancia. Madrid. 1897. Graphite & color pencils [Oic]. 19,5 x 12 cm. Private collection.

OPP.97:130; PP.97:105; Z.VI:98





Annotations. Barcelona. 1897. Graphite pencil on paper. 22,2 x 16,3 cm. Museu Picasso, Barcelona. Gift of Pablo Picasso, 1970.

OPP.97:194; MPB:110.831r

Trois esquisses de chat. Madrid. 1897~1898. Pen & conté pencil on notebook paper. 20 x 12 cm. Museu Picasso, Barcelona. Donation 1970.

OPP.97:064; MPB:111.524r; PP.9798:040; BF.14:28p





Scène d'intérieur: Vieil homme, Célestine et jeune fille assise. Madrid. 1897~1898 [1901]. Conté pencil on ivory paper [Obverse of *Croquis divers*]. [16,5] 16,4 x 24,7 cm. Museu Picasso, Barcelona. Donation 1970.

OPP.97:068; C:524; MPB:110.389; P.I:540; PP.9798:029; CS.15:35p; OR.90:66p; TK.02*:n/a; TO.97*:65a

Trois croquis de chat. Madrid. 1897~1898. Sanguine & watercolor on paper. 20 x 12 cm. Museu Picasso, Barcelona. Donation 1970.

OPP.97:069; MPB:111.532r; PP.9798:050





Esquisse. Madrid. 1897~1898. Graphite pencil, color pencil & sanguine on paper. 20 x 12 cm. Museu Picasso, Barcelona. Donation 1970.

OPP.97:081; MPB:111.531r; PP.9798:048

Portrait de personnage masculin assis, lisant le journal.
Madrid. 1897~1898. Sanguine on notebook paper. 20 x 12 cm.
Museu Picasso, Barcelona. Donation 1970.

OPP.97:083; MPB:111.523; PP.9798:039





Croquis. Madrid. 1897~1898. Graphite pencil on paper. 20 x 12 cm. Museu Picasso, Barcelona. Donation 1970.

OPP.97:092; MPB:111.513r; PP.9798:034

Femme assise dans un intérieur.

Madrid. 1897~1898. [Pen, watercolor & magenta pencil on paper] Pen & ink & brush & ink, watercolor & sanguine on paper [Reverse of *Esquisse de la mère de l'artiste*]. 22,2 x 31,7 cm. Museu Picasso, Barcelona. Donation 1970.

OPP.97:100; C:536; MPB:110.830r; PP.9798:033; BA.18*:60p; TK.02*:n/a; TO.97*:91b





Deux têtes féminines, de profil et autres croquis. Madrid. 1897~1898. Conté pencil, graphite pencil & sanguine on paper. 12 x 20 cm. Museu Picasso, Barcelona. Donation 1970.

OPP.97:101; MPB:111.514; PP.9798:035

Trois esquisses de buste de femme au chapeau à plumes. Madrid. 1897~1898. Sanguine on notebook paper. 20 x 12 cm. Museu Picasso, Barcelona. Donation 1970.

OPP.97:103; MPB:111.529; PP.9798:046





Portrait du père de l'artiste et autres croquis.

Madrid. 1897~1898. Sepia ink & pen on paper.
20,3 x 26,2 cm. Museu Picasso, Barcelona.
Donation 1970.

OPP.97:104; C:520; MPB:110.652r; PP.9798:031

Les doigts de la main. Madrid.
1897~1898. Pencil & conté crayon on
sketchbook cover. 13,9 x 23,3 cm. Museu
Picasso, Barcelona.

OPP.97:124; MPB:110.259v;
PP.9798:028.i; BA.12b*:n/a; BL.91:90p;
BL.91:91p; JR.91:96p





Chemin entre les arbres. Madrid. 1897~1898.
Oil on canvas. 28,1 x 39,6 cm. Museu Picasso,
Barcelona. Donation 1970.

OPP.97:025; MPB:110.068; PP.9798:001;
EV.08:16; EV.10*:238p; TO.94*:83

Étang dans El Retiro. Madrid.
1897~1898. Oil on canvas. [19,5] 19,6 x
26,7 cm. Museu Picasso, Barcelona.

OPP.97:026; C:102; MPB:110.094;
PP.9798:015; BA.97*:n/a; MA:92*:n/a;
TO.94*:84





Vue d'El Retiro. Madrid. 1897~1898. Sanguine on paper. 12 x 20 cm. Museu Picasso, Barcelona. Donation 1970.

OPP.97:030; MPB:111.515; PP.9798:022;
TO.94*:103

Escalier et rampe dans El Retiro.

Madrid. 1897~1898. Sanguine on paper. 12 x 20 cm. Museu Picasso, Barcelona. Donation 1970.

OPP.97:031; MPB:111.516; PP.9798:023;
TO.94*:104





Esquisse d'une salle d'El Prado. Madrid.
1897~1898. Sanguine on paper. 12 x 20 cm.
Museu Picasso, Barcelona. Donation 1970.

OPP.97:032; MPB:111.520; PP.97:093;
TO.94*:106

Vue d'El Retiro. Madrid. 1897~1898.
Sanguine on paper. 12 x 20 cm. Museu
Picasso, Barcelona. Donation 1970.

OPP.97:033; MPB:111.518; PP.9798:018;
TO.94*:105





El Retiro. Madrid. 1897~1898. Lead pencil on paper. 12 x 20 cm. Museu Picasso, Barcelona. Donation 1970.

OPP.97:034; MPB:111.513; PP.9798:020;
TO.94*:102

Le guitariste assis. Barcelona [Madrid]. 1897~1898. Ink [& crayon] on sketchbook page. 22 x 13 cm. The Picasso Estate.

OPP.97:061; PA.20j:13p; RI.05:54p





Esquisse de la mère de l'artiste. Madrid. 1897~1898.
Watercolor, wash & sanguine on paper [Obverse of *Femme assise dans un intérieur*]. 31,7 x 22,2 cm. Museu Picasso, Barcelona.
Donation 1970.

OPP.97:070; C:537; MPB:110.830; PP.9798:032; MA.83a*:n/a;
TO.97*:91a

La bagarre. Madrid. 1897~1898. Black pencil on lined brown paper. 20,1 x 26,2 cm. Museu Picasso, Barcelona. Donation 1970.

OPP.97:072; C:129; MPB:110.335;
PP.97:095; CK.10:47; JG.84*:34;
JR.91:91p; MA.83a*:n/a; PL.89:35;
ST.88*:n/a; TO.97*:63





Personnage masculin au chapeau, de profil. Madrid. 1897~1898.
Conté pencil & graphite pencil on paper. 20 x 12 cm. Museu Picasso,
Barcelona. Donation 1970.

OPP.97:078; MPB:111.519r; PP.9798:038

'Si quebró el cántaro' (d'après Goya). Madrid. 1897~1898.
Sanguine on paper. 20 x 12 cm. Museu Picasso, Barcelona.
Donation 1970.

OPP.97:079; MPB:111.517; PP.9798:026; BA.12b*:174p;
OR.90:72p





Album. Madrid. 1897~1898. M/U. 20 x 12 cm.
Museu Picasso, Barcelona. Donation 1970.

OPP.97:080; MPB:110.924c; BA.08a*:n/a;
TO.94*:n/a; TO.97*:n/a

Esquisses de peinture de Velázquez.

Madrid. 1897~1898. Conté pencil on white paper [Obverse of *Croquis divers et étude de bois*]. 15,7 x 21,8 cm. Museu Picasso, Barcelona. Donation 1970.

OPP.97:084; C:551; MPB:110.398;
PP.9798:024; BA.08a*:n/a; CR.01:23p;
JG.84*:33; JR.91:91p; MA.23c:36p;
PE.01a:146p; PS.08:146p; SG.96:6.2;
TO.97*:64a; TV.06*:n/a





Esquisses diverses. Madrid. 1897~1898. Conté pencil on paper. 20 x 12 cm. Museu Picasso, Barcelona. Donation 1970.

OPP.97:085; MPB:111.535r; PP.9798:054

Esquisses diverses. Madrid. 1897~1898. Sanquine & color pencil on paper. 20 x 12 cm. Museu Picasso, Barcelona. Donation 1970.

OPP.97:086; MPB:111.532; PP.9798:049





Esquisses diverses. Madrid. 1897~1898. Sanguine & conté pencil on paper. 20 x 12 cm. Museu Picasso, Barcelona. Donation 1970.

OPP.97:087; MPB:111.533; PP.9798:051

Croquis. Madrid. 1897~1898. Color pencil & sanguine on paper. 12 x 20 cm. Museu Picasso, Barcelona. Donation 1970.

OPP.97:088; MPB:111.534r; PP.9798:052





Croquis: personnage masculin assis. Madrid. 1897~1898. Black pencil on paper. 20 x 12 cm. Museu Picasso, Barcelona. Donation 1970.

OPP.97:089; MPB:111.535; PP.9798:053

Croquis. Madrid. 1897~1898. Sanguine & color pencil on paper. 12 x 20 cm. Museu Picasso, Barcelona. Donation 1970.

OPP.97:090; MPB:111.528r; PP.9798:045





Croquis. Madrid. 1897~1898. Sanguine on paper. 20 x 12 cm. Museu Picasso, Barcelona. Donation 1970.

OPP.97:091; MPB:111.527; PP.9798:043



Croquis. Madrid. 1897~1898. Sanguine on notebook paper. 12 x 19,4 cm. Museu Picasso, Barcelona. Donation 1970.

OPP.97:094; MPB:111.526; PP.9798:042



Croquis divers. Madrid. 1897~1898. Graphite pencil on notebook paper. 12 x 20 cm. Museu Picasso, Barcelona. Donation 1970.

OPP.97:095; MPB:111.518r; PP.9798:036

Croquis divers. Madrid. 1897~1898. Sanguine on notebook paper. 12 x 20 cm. Museu Picasso, Barcelona. Donation 1970.

OPP.97:096; MPB:111.525; PP.9798:041





Croquis divers. Madrid. 1897~1898. Sepia ink & pen on paper. 26,2 x 20,3 cm. Museu Picasso, Barcelona. Donation 1970.

OPP.97:097; C:134; MPB:110.652; PP.9798:030;
BA.08a*:n/a; BS.55:38-39p; TV.06*:n/a

Croquis divers. Madrid. 1897~1898. Sanguine on notebook paper. 20 x 12 cm. Museu Picasso, Barcelona. Donation 1970.

OPP.97:098; MPB:111.519; PP.9798:037





Croquis divers de figure féminine faisant de l'exercice. Madrid. 1897~1898. Sanguine on paper. 20 x 12 cm. Museu Picasso, Barcelona. Donation 1970.

OPP.97:099; MPB:111.528; PP.9798:044

Deux femmes. Madrid. 1897~1898. Conté pencil on paper. 20 x 16,3 cm. Museu Picasso, Barcelona. Donation 1970.

OPP.97:102; C:541; MPB:110.402; PP.9798:002;
PB.81*:6A.33





Le peintre au travail assis devant son chevalet. Madrid. 1897~1898. Brown pencil on notebook paper. 20 x 12 cm. Museu Picasso, Barcelona. Donation 1970.

OPP.97:106; MPB:111.524; PP.9798:027; BA.08a*:n/a

Homme à la barbiche. Madrid. 1897~1898. Blue crayon on paper [Reverse of *Personnages et une femme*]. 21 x 16 cm. Sotheby's. #324, L20004, 02/05/20. Formerly Sotheby's. #561, L16005, 02/05/16; Marina Picasso Collection.

OPP.97:126; PP.9798:060; Z.VI:130





Couple assis et autres croquis. Madrid. 1897~1899. Charcoal & black pencil on ivory paper. 33,4 x 23,5 cm. Museu Picasso, Barcelona. Donation 1970.

OPP.97:093; C:621; MPB:110.681r; PP.9798:012;
PB.81*:6A.30r; TO.97*:66b

Au café. Madrid. 1897~1899. Charcoal & conté crayon on ivory paper. 23,5 x 33,4 cm. Museu Picasso, Barcelona. Donation 1970.

OPP.97:105; C:625; MPB:110.681;
PP.9798:011; BA.18*:55p; PB.81*:6A.30;
TK.02*:n/a; TO.97*:66a

